



Women in Science DIY Kit

Women in Science is a card game that familiarizes players with remarkable, often unknown, women of science and offers inspiring role models for kids. You can print the game by yourself using this file or order a copy from our website : www.LuanaGames.com

This project was made possible by hundreds of backers who supported our crowdfunding campaign. Thank you so much!

Update 2.0: Added the Women in Space Expansion (16 cards)

We would like to thank our sponsors:



Nova: science for curious minds

Nova.org.au



WomenInBio.org

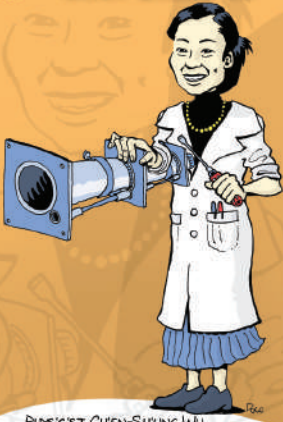
This file is released under a
Creative Commons BY-NC-ND license.
That means:

- You **CAN** print it as much as you want
- You **CAN** distribute the game or this file for free
- You **CAN'T** sell the game without asking us first
- You **CAN'T** modify it without asking us first

Instructions: *Print pages 2 to 9, then put the sheets back in the printer (other side, same direction) and print page 10 on the back of the cards (you might want to test it once to be sure it fits). You can then cut the cards following the dashed lines. The best way is to use a paper trimmer, and cut about 2mm from the dashed line towards the inside of the card. We recommend using glossy white paper between 150g/m² and 300g/m².*

1

CHIEN-SHUNG WU



PHYSICIST CHIEN-SHUNG WU MADE IMPORTANT DISCOVERIES RELATED TO RADIOACTIVITY. SHE PARTICIPATED IN THE MANHATTAN PROJECT, CREATED THE WU EXPERIMENT, AND IMPROVED GEIGER COUNTERS.

1

ROSE DIENG-KUNTE



COMPUTER SCIENTIST ROSE DIENG-KUNTE SPECIALIZED IN ARTIFICIAL INTELLIGENCE. SHE WORKED ON KNOWLEDGE MANAGEMENT AND THE SEMANTIC WEB.

1

TEWHIDA BEN SHEIKH



TEWHIDA BEN SHEIKH WAS THE FIRST WOMAN FROM NORTH AFRICA TO BECOME A DOCTOR AND A GYNECOLOGIST. SHE WAS A PIONEER IN THE FIELD OF FAMILY PLANNING.

1

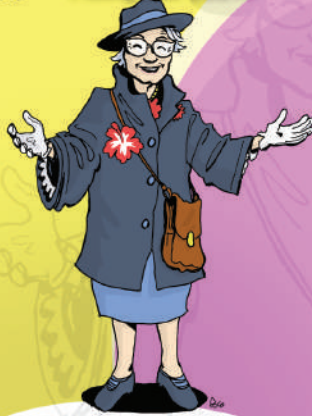
WANGARI MAATHAI



A BIOLOGIST AND PROFESSOR OF ANATOMY, WANGARI MUTA MAATHAI WON THE NOBEL PEACE PRIZE IN RECOGNITION OF HER CONTRIBUTION TO SUSTAINABLE DEVELOPMENT.

2

FRANÇOISE DOLTO



PEDIATRICIAN AND PSYCHOANALYST FRANÇOISE DOLTO IS RECOGNIZED FOR HER RESEARCH INTO THE PSYCHOLOGY OF THE BABY AND THE CHILD, AND OF THEIR BODY LANGUAGE.

2

GRACE HOPPER



MATHEMATICIAN GRACE HOPPER DEVELOPED THE FIRST COMPILER AND THE COBOL PROGRAMMING LANGUAGE. SHE POPULARIZED THE STORY OF THE FIRST "REAL" COMPUTER BUG.

1

MARIA MONTESSORI



MARIA MONTESSORI WANTED TO RAISE EDUCATION TO THE RANK OF A SCIENCE. SHE DEVELOPED THE MONTESSORI TEACHING METHODS, AND WAS NOMINATED 3 TIMES FOR THE NOBEL PEACE PRIZE.

1

MELANIE KLEIN



PSYCHOANALYST MELANIE KLEIN WAS INTERESTED IN THE PSYCHOLOGY OF THE CHILD. SHE DEVELOPED NEW TREATMENT TECHNIQUES AND GREATLY INFLUENCED PSYCHOANALYSIS.

10

ALICE MILLER



PSYCHOLOGIST ALICE MILLER WAS VERY INFLUENTIAL IN STUDYING VIOLENCE IN EDUCATION. SHE DENOUNCED CHILD-RAISING METHODS THAT HARM CHILDREN OR DO NOT MEET THEIR NEEDS.

1

KAREN HORNEY



KAREN HORNEY, PSYCHIATRIST AND PSYCHOANALYST, WAS A PIONEER IN THE ANALYSIS OF FEMINE PSYCHOLOGY. SHE AUTHORED ONE OF THE FIRST SELF-HELP BOOKS.

3

ROSALIND FRANKLIN



ROSALIND FRANKLIN, A CHEMIST AND X-RAY CRYSTALLOGRAPHER, WAS INSTRUMENTAL IN DISCOVERING THE STRUCTURE OF DNA. SHE WAS ALSO A PIONEER IN THE MOLECULAR ANALYSIS OF VIRUSES.

2

CECILIA PAYNE



ASTRONOMER AND ASTROPHYSICIST
CECILIA PAYNE ANALYZED THE SPECTRA OF STARS AND NOVAE, AND DISCOVERED THAT THE STARS ARE COMPOSED OF 99% HYDROGEN AND HELIUM.

3

LISE MEITNER



PHYSICIST LISE MEITNER DISCOVERED NUCLEAR FISSION AND CONTRIBUTED SIGNIFICANTLY TO THE ADVANCEMENT OF KNOWLEDGE ABOUT RADIOACTIVITY AND NUCLEAR PHYSICS.

4

MARIA TELKES



PHYSICIST MARIA TELKES WAS A PIONEER IN SOLAR ENERGY TECHNOLOGY. SHE DESIGNED, AMONG OTHER THINGS, THE FIRST THERMOELECTRIC POWER GENERATOR AND THE FIRST SOLAR HEATING SYSTEM.

3

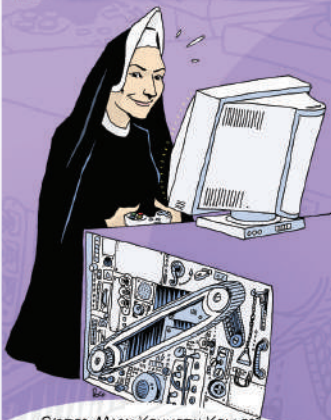
DIAN FOSSEY



PRIMATOLOGIST DIAN FOSSEY MADE IMPORTANT DISCOVERIES ABOUT THE BEHAVIOR OF GORILLAS. SHE ALSO CAMPAIGNED FOR THEIR PROTECTION, AND FOUGHT AGAINST POACHING.

4

MARY KENNETH KELLER



SISTER MARY KENNETH KELLER WAS AT ONCE A NUN, A MATHEMATICIAN AND A PIONEER OF COMPUTER SCIENCE. SHE PARTICIPATED IN THE CREATION OF THE BASIC PROGRAMMING LANGUAGE.

k

MARGARET MEAD



ALTHOUGH SOME OF HER WORK IS CONTROVERSIAL, MARGARET MEAD WAS A VERY RESPECTED ANTHROPOLOGIST. SHE HELPED DEFINE CULTURAL PATTERNS AND PROMOTED HUMANISTIC ANTHROPOLOGY.

5

LILLIAN GILBRETH



LILLIAN GILBRETH WAS AT ONCE AN INDUSTRIAL ENGINEER, A PSYCHOLOGIST AND THE MOTHER OF 12 CHILDREN. SHE WAS A PIONEER IN ERGONOMICS AND IN WORK PSYCHOLOGY.

6

SOFIA KOVALEVSKAYA



MATHEMATICIAN SOFIA KOVALEVSKAYA CONTRIBUTED TO ANALYSIS, DIFFERENTIAL EQUATIONS AND THE PHYSICS OF ROTATING BODIES. THE KOVALEVSKAYA TOP IS USED TO MODEL SATURN'S RINGS.

7

ELLEN HAYES



ELLEN HAYES WAS A MATHEMATICIAN, AN ASTRONOMER AND A TEACHER. SHE CALCULATED THE ORBIT OF ASTEROIDS AND CELESTIAL BODIES. SHE WAS ALSO A SUFFRAGIST AND A LABOR RIGHTS ACTIVIST.

8

MARY SOMERVILLE



ASTRONOMER MARY SOMERVILLE WROTE AND TRANSLATED BOOKS IN MANY FIELDS OF SCIENCE. SHE PREDICTED THAT ANOTHER PLANET WAS PERTURBING URANUS BEFORE NEPTUNE WAS DISCOVERED.

6

EMMY NOETHER



EMMY NOETHER WAS A VERY INFLUENTIAL MATHEMATICIAN. SHE IS KNOWN FOR HER SIGNIFICANT CONTRIBUTIONS TO ABSTRACT ALGEBRA AND THEORETICAL PHYSICS.

4

MARGARET FOUNTAINE



ENTOMOLOGIST MARGARET FOUNTAINE TRAVELLED ACROSS 60 COUNTRIES TO COLLECT, OBSERVE AND SKETCH INSECTS. SHE WAS AN EXPERT IN TROPICAL BUTTERFLY LIFE-CYCLES.

8

ELLEN H. RICHARDS



ELLEN SWALLOW RICHARDS WAS AN INDUSTRIAL CHEMIST AND A PIONEER IN SANITARY ENGINEERING AND DOMESTIC SCIENCE. SHE WAS ONE OF THE FIRST PEOPLE TO APPLY CHEMISTRY TO THE STUDY OF NUTRITION.

9

LEONA WOODS



PHYSICIST LEONA WOODS HELPED BUILD THE FIRST NUCLEAR REACTOR AND THE FIRST ATOMIC BOMB. HER WORK ON TREE RINGS OPENED THE DOOR TO THE STUDY OF CLIMATE CHANGE.

6

RACHEL CARSON



BIOLOGIST RACHEL CARSON STUDIED THE HARMFUL EFFECTS OF PESTICIDES ON BIRDS AND THE ENVIRONMENT. HER BOOK "SILENT SPRING" HELPED TO LAUNCH THE ENVIRONMENTAL MOVEMENT.

10

TIKVAH ALPER



PHYSICIST TIKVAH ALPER WORKED ON ALPHA PARTICLES WITH LISE MEITNER. LATER SHE BECAME A RADIOBIOLOGIST AND DISCOVERED THAT PRION DISEASES ARE NOT TRANSMITTED BY A VIRUS.



LYNN MARGULIS



BIOLOGIST LYNN MARGULIS IS BEST KNOWN FOR HER SYMBIOGENESIS THEORY, WHICH DESCRIBES HOW EUKARYOTIC CELLS CAME TO CONTAIN SOME ORGANELLES BY ENVELOPING OTHER EARLY CELL TYPES.



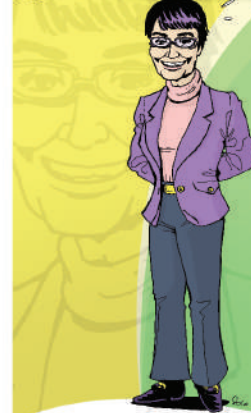
EUPHEMIA HAYNES



EUPHEMIA LOFTON HAYNES BECAME THE FIRST AFRICAN-AMERICAN WOMAN TO OBTAIN A PhD IN MATHEMATICS. SHE DEVOTED HER LIFE TO EDUCATION AND ACTIVISM.



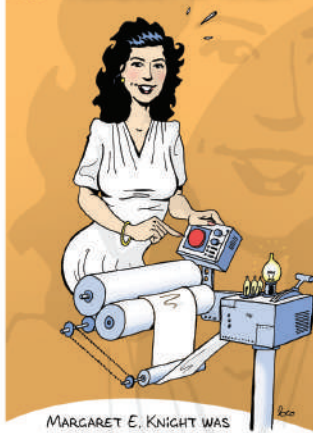
THEO COLBORN



THEO COLBORN WAS A ZOOLOGIST AND ENVIRONMENTAL HEALTH ANALYST. SHE STUDIED HOW HUMAN-PRODUCED CHEMICALS CAN CONCENTRATE IN THE FOOD CHAIN AND AFFECT DEVELOPMENT IN PEOPLE AND OTHER ANIMALS.



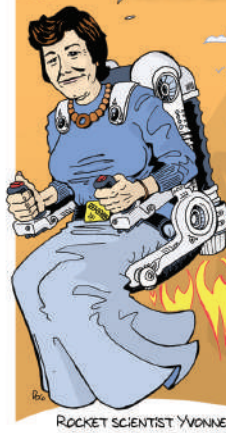
MARGARET E. KNIGHT



MARGARET E. KNIGHT WAS THE MOST FAMOUS WOMAN INVENTOR OF THE 19TH CENTURY. SHE DESIGNED A MACHINE TO FOLD AND GLUE PAPER BAGS, AND NUMEROUS OTHER DEVICES.



YVONNE BRILL



ROCKET SCIENTIST YVONNE BRILL DEVELOPED ROCKET, SATELLITE AND JET PROPULSION TECHNOLOGIES. THE HYDRAZINE RESISTOJET SHE INVENTED GREATLY IMPROVED SATELLITE PROPULSION METHODS.



RUBY PAYNE-SCOTT



RUBY PAYNE-SCOTT WAS THE FIRST FEMALE RADIO ASTRONOMER, AND PLAYED A KEY ROLE IN THE FOUNDATION OF THAT SCIENCE. SHE STUDIED THE INFLUENCE OF EARTH'S MAGNETIC FIELD AND SOLAR BURSTS.



ELIZABETH KENNY



ELIZABETH KENNY WAS A NURSE WHO PROMOTED A NEW EXERCISE-BASED TREATMENT FOR POLIO MYELITIS, WHICH CONTRIBUTED TO THE CREATION OF PHYSIOTHERAPY.



DOROTHY HILL



GEOLOGIST DOROTHY HILL CONTRIBUTED SIGNIFICANTLY TO INVERTEBRATE PALAEOLOGY, PARTICULARLY CORALS. SHE WAS THE FIRST FEMALE PROFESSOR AT AN AUSTRALIAN UNIVERSITY.



KATHERINE JOHNSON



KATHERINE JOHNSON WAS A PIONEER IN SPACE SCIENCE AND COMPUTING. SHE CALCULATED THE TRAJECTORY FOR THE APOLLO 11 FLIGHT TO THE MOON.



DOROTHY HODGKIN



BIOCHEMIST DOROTHY CROWFOOT HODGKIN WON THE NOBEL PRIZE IN CHEMISTRY FOR THE DEVELOPMENT OF PROTEIN X-RAY CRYSTALLOGRAPHY.



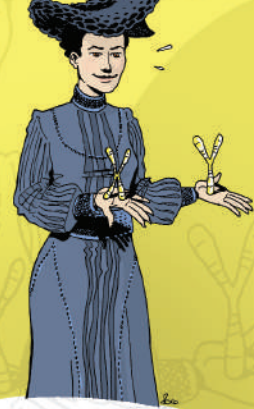
SOPHIE GERMAIN



ALTHOUGH SHE NEVER RECEIVED FORMAL TRAINING, MATHEMATICIAN SOPHIE GERMAIN MADE SIGNIFICANT CONTRIBUTIONS TO NUMBER THEORY AND ELASTICITY. SHE ALSO STUDIED PHILOSOPHY AND PSYCHOLOGY.



NETTIE STEVENS



GENETICIST NETTIE STEVENS WAS ONE OF THE FIRST SCIENTISTS TO DESCRIBE X AND Y CHROMOSOMES AND THEIR ROLE IN SEX DETERMINATION.



ADA LOVELACE



MATHEMATICIAN ADA LOVELACE WAS THE FIRST EVER COMPUTER PROGRAMMER. SHE WROTE THE FIRST ALGORITHM FOR CHARLES BABBAGE'S ANALYTICAL ENGINE.



INGE LEHMANN



INGE LEHMANN WAS A SEISMOLOGIST. SHE DISCOVERED THAT THE MOLTEN INSIDE OF THE EARTH HAS A SOLID INNER CORE.



MARIE THARP



GEOLOGIST AND OCEANOGRAPHIC CARTOGRAPHER MARIE THARP CREATED THE FIRST MAP OF THE ENTIRE OCEAN FLOOR, AND REVEALED THE PRESENCE OF UNDERWATER MOUNTAINS - THE MID-OCEAN RIDGES.



IRÈNE JOLIOT-CURIE



PHYSICIST IRÈNE JOLIOT-CURIE, THE DAUGHTER OF MARIE CURIE, WON THE NOBEL PRIZE IN CHEMISTRY FOR HER WORK CREATING ARTIFICIALLY RADIOACTIVE ELEMENTS.



HEDY LAMARR



HOLLYWOOD ACTRESS HEDY LAMARR CO-INVENTED AN IMPORTANT MILITARY COMMUNICATIONS TECHNOLOGY, WHICH IS NOW USED IN WiFi AND BLUETOOTH.



ENROLLMENT



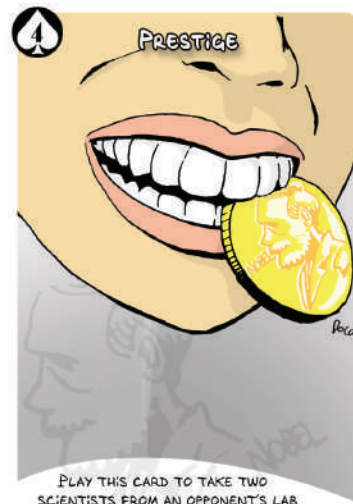
THIS CARD ALLOWS YOU TO CHOOSE A CHARACTER FROM THE DISCARD PILE AND ADD IT TO YOUR HAND.



THIS CARD ALLOWS YOU TO CHOOSE A CHARACTER FROM THE DISCARD PILE AND ADD IT TO YOUR HAND.



PLAY THIS CARD TO TAKE TWO SCIENTISTS FROM AN OPPONENT'S LAB AND ADD THEM TO YOUR HAND. YOUR OPPONENT'S LAB IS DESTROYED AND ITS REMAINING CARDS RETURN TO HIS HAND.



PLAY THIS CARD TO TAKE TWO SCIENTISTS FROM AN OPPONENT'S LAB AND ADD THEM TO YOUR HAND. YOUR OPPONENT'S LAB IS DESTROYED AND ITS REMAINING CARDS RETURN TO HIS HAND.



WHEN PLAYED WITH A SCIENTIST CARD, THIS CARD BECOMES AN IDENTICAL COPY. YOU CAN USE UP TO TWO CLONES TO FORM A LAB. IF THE LAB IS DESTROYED, THE CLONE CARD IS FREE TO BE USED WITH ANY SCIENTIST.



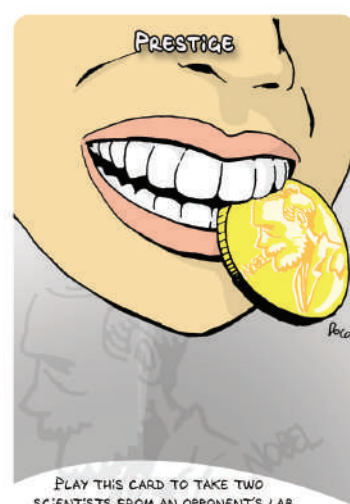
WHEN PLAYED WITH A SCIENTIST CARD, THIS CARD BECOMES AN IDENTICAL COPY. YOU CAN USE UP TO TWO CLONES TO FORM A LAB. IF THE LAB IS DESTROYED, THE CLONE CARD IS FREE TO BE USED WITH ANY SCIENTIST.



WHEN PLAYED WITH A SCIENTIST CARD, THIS CARD BECOMES AN IDENTICAL COPY. YOU CAN USE UP TO TWO CLONES TO FORM A LAB. IF THE LAB IS DESTROYED, THE CLONE CARD IS FREE TO BE USED WITH ANY SCIENTIST.



WHEN PLAYED WITH A SCIENTIST CARD, THIS CARD BECOMES AN IDENTICAL COPY. YOU CAN USE UP TO TWO CLONES TO FORM A LAB. IF THE LAB IS DESTROYED, THE CLONE CARD IS FREE TO BE USED WITH ANY SCIENTIST.



PLAY THIS CARD TO TAKE TWO SCIENTISTS FROM AN OPPONENT'S LAB AND ADD THEM TO YOUR HAND. YOUR OPPONENT'S LAB IS DESTROYED AND ITS REMAINING CARDS RETURN TO HIS HAND.

How To Play

THE GOAL IS TO COLLECT 4 CARDS OF THE SAME COLOR TO FORM A "LAB". THE FIRST PLAYER WHO FORMS 5 LABS WINS.

6 CARDS ARE PLACED FACE-UP IN FRONT OF EACH PLAYER. THE DECK IS PUT FACE-DOWN AT THE CENTER OF THE TABLE AND THE FIRST CARD IS REMOVED AND PLACED FACE-UP TO START THE DISCARD PILE.

AT THE BEGINNING OF A TURN, THE PLAYER CHOOSES EITHER TO TAKE A CARD FROM THE DECK OR TO TAKE THE FIRST CARD OF THE DISCARD PILE. AT THE END OF THE TURN, THE CURRENT PLAYER CAN ONLY KEEP 6 CARDS IN THEIR HAND, THE REST MUST BE DISCARDED.

SOME CARDS HAVE MORE THAN ONE COLOR, AND CAN CONTRIBUTE TO A LAB OF EITHER COLOR.

THE ENROLLMENT CARD PERMITS A PLAYER TO TAKE ANY SCIENTIST FROM THE DISCARD PILE. THE ENROLLMENT CARD IS THEN PUT UNDER THE DISCARD PILE AND CAN'T BE PICKED UP AFTERWARDS.

THE PRESTIGE CARD PERMITS A PLAYER TO STEAL 2 SCIENTISTS FROM AN OPPONENT'S LAB (THE OPPONENT'S LAB IS DESTROYED AND THE REMAINS RETURN TO THE OPPONENT'S HAND). THE PRESTIGE CARD IS THEN PUT UNDER THE DISCARD PILE AND CAN'T BE PICKED UP AFTERWARDS.

THE CLONE CARD ALLOWS A PLAYER TO MAKE AN EXACT COPY OF A SCIENTIST THAT IS ALREADY IN THE PLAYER'S HAND. THE CLONE CARD IS PLACED ALONGSIDE THE COPIED SCIENTIST WHEN FORMING THE LAB. YOU CAN USE UP TO TWO CLONES IN THE SAME LAB. IF THE LAB IS DESTROYED, THE CLONE CARD CAN BE USED AGAIN WITH ANY SCIENTIST.

IF THERE ARE NO MORE CARDS IN THE DECK AT THE START OF A PLAYER'S TURN, THAT PLAYER LOSES THE CARDS IN THEIR HAND AND IS ELIMINATED FROM THE GAME. THE PLAYER'S CARDS AND LABS ARE SHUFFLED WITH THE DISCARD PILE TO FORM A NEW DECK. THE FIRST CARD OF THE DECK BECOMES THE NEW DISCARD PILE.

HINTS & TIPS

CARD COLORS ARE ASSOCIATED WITH SCIENTIFIC FIELDS:

BIOLOGY / MEDICINE
ASTRONOMY & ENGINEERING
ECOLOGY / GEOLOGY
MATHEMATICS & COMPUTER SCIENCE
PSYCHOLOGY / ANTHROPOLOGY
WOMEN IN SPACE (EXPANSION PACK)

WHEN CHOOSING WHICH CARDS TO KEEP IN YOUR HAND, REMEMBER THAT SOME COLORS ARE MORE COMMON THAN OTHERS. FOR INSTANCE, ORANGE AND YELLOW CARDS ARE VERY COMMON, AND PINK CARDS ARE THE RAREST. KEEP AN EYE ON YOUR OPPONENTS CARDS TOO.

WHEN FORMING A NEW LAB OR STEALING FROM YOUR OPPONENTS, REMEMBER THAT CLONE CARDS ARE THE MOST VALUABLE, FOLLOWED BY TWO-COLOR CARDS, AND THEN SINGLE-COLOR CARDS. KEEP IN MIND THAT YOUR OPPONENTS WILL BE MORE TEMPTED TO STEAL YOUR LABS IF THERE ARE MORE VALUABLE CARDS IN THEM, ESPECIALLY IF THERE ARE FEW LABS IN PLAY.

THE BEST WAY TO PREVENT A LAB FROM BEING DESTROYED IS TO KEEP IT IN YOUR HAND AS LONG AS IT DOESN'T FORCE YOU TO DISCARD A VALUABLE CARD.

IT CAN BE TEMPTING TO USE A PRESTIGE CARD AS SOON AS A LAB COMES IN PLAY, BUT, UNLESS USING IT PREVENTS YOU FROM DISCARDING A VALUABLE CARD, IT IS OFTEN MORE REWARDING TO WAIT.

CUSTOMISE THE GAME BY ADDING OR REMOVING SPECIAL CARDS AND ADDING HOUSE RULES.

VISIT WWW.LUANAGAMES.COM TO READ MORE ABOUT WOMEN IN SCIENCE.



CLAUDIE HAIGNERÉ STUDIED RHEUMATOLOGY AND NEUROSCIENCE. SHE BECAME THE FIRST EUROPEAN WOMAN TO VISIT THE INTERNATIONAL SPACE STATION.



AEROSPACE ENGINEER
KALPANA CHAWLA WAS A MISSION SPECIALIST AND PRIMARY ROBOTIC ARM OPERATOR ON SPACE SHUTTLE COLUMBIA.



PHYSICIAN MAE JEMISON BECAME THE FIRST AFRICAN AMERICAN WOMAN TO TRAVEL IN SPACE. SHE IS ALSO THE FIRST REAL ASTRONAUT TO APPEAR ON STAR TREK.



AEROSPACE ENGINEER
STEPHANIE WILSON SPENT A TOTAL OF 43 DAYS IN SPACE DURING 3 SEPARATE MISSIONS. SHE SERVED AS A ROBOTIC ARM OPERATOR AND FLIGHT ENGINEER.



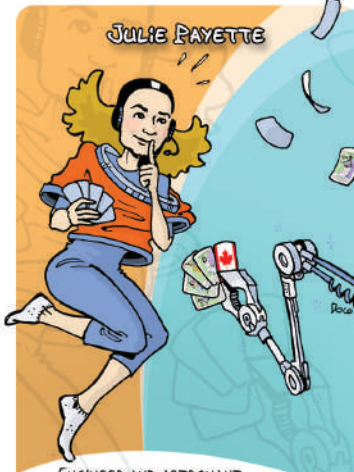
CARDIOVASCULAR SURGEON
CHIAKI MUKAI BECAME THE FIRST JAPANESE WOMAN IN SPACE, AND THE FIRST JAPANESE CITIZEN TO COMPLETE TWO SPACEFLIGHTS.



SKYDIVER AND ENGINEER
VALENTINA TERESHKOVA BECAME THE FIRST WOMAN TO HAVE FLOWN IN SPACE ON JUNE 16, 1963. SHE TOOK PHOTOGRAPHS WHICH WERE USED TO IDENTIFY AEROSOL LAYERS IN THE ATMOSPHERE.



PHYSICIST SALLY RIDE HELPED DEVELOP THE CANADARM ROBOTIC ARM. SHE COMPLETED TWO SPACEFLIGHTS FOR A TOTAL OF 14 DAYS IN SPACE.



ENGINEER AND ASTRONAUT
JULIE PAYETTE HAS COMPLETED TWO SPACEFLIGHTS AND SPENT 25 DAYS IN THE INTERNATIONAL SPACE STATION WHERE SHE OPERATED THE CANADARM ROBOTIC ARM.



Discovery

PLACE THIS CARD ON A LAB TO PROTECT IT FROM YOUR OPPONENT'S PRESTIGE CARDS. WHEN YOU PLAY THIS CARD, DRAW TWO CARDS FROM THE DECK.



Discovery

PLACE THIS CARD ON A LAB TO PROTECT IT FROM YOUR OPPONENT'S PRESTIGE CARDS. WHEN YOU PLAY THIS CARD, DRAW TWO CARDS FROM THE DECK.



Discovery

PLACE THIS CARD ON A LAB TO PROTECT IT FROM YOUR OPPONENT'S PRESTIGE CARDS. WHEN YOU PLAY THIS CARD, DRAW TWO CARDS FROM THE DECK.



Discovery

PLACE THIS CARD ON A LAB TO PROTECT IT FROM YOUR OPPONENT'S PRESTIGE CARDS. WHEN YOU PLAY THIS CARD, DRAW TWO CARDS FROM THE DECK.



Prestige

PLAY THIS CARD TO TAKE TWO SCIENTISTS FROM AN OPPONENT'S LAB AND ADD THEM TO YOUR HAND. YOUR OPPONENT'S LAB IS DESTROYED AND ITS REMAINING CARDS RETURN TO HIS HAND.



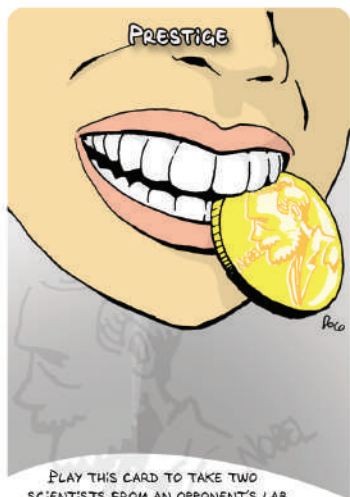
Prestige

PLAY THIS CARD TO TAKE TWO SCIENTISTS FROM AN OPPONENT'S LAB AND ADD THEM TO YOUR HAND. YOUR OPPONENT'S LAB IS DESTROYED AND ITS REMAINING CARDS RETURN TO HIS HAND.



Prestige

PLAY THIS CARD TO TAKE TWO SCIENTISTS FROM AN OPPONENT'S LAB AND ADD THEM TO YOUR HAND. YOUR OPPONENT'S LAB IS DESTROYED AND ITS REMAINING CARDS RETURN TO HIS HAND.



Prestige

PLAY THIS CARD TO TAKE TWO SCIENTISTS FROM AN OPPONENT'S LAB AND ADD THEM TO YOUR HAND. YOUR OPPONENT'S LAB IS DESTROYED AND ITS REMAINING CARDS RETURN TO HIS HAND.

15% OFF

Any single deck or expansion pack
on LuanaGames.com

Coupon code : **GRACEHOPPER**

Please share with friends and social networks.

